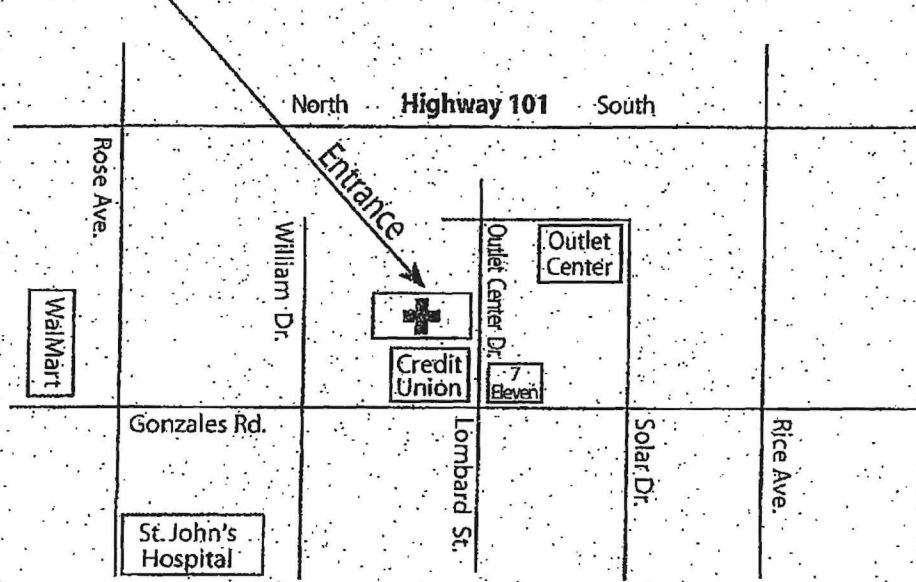
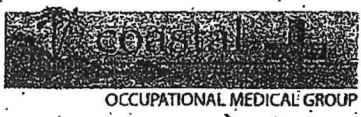


OCCUPATIONAL MEDICAL GROUP

1901 Outlet Center Drive, Suite 100
Oxnard, CA 93036
(805) 988-3200 • Fax (805) 988-3707
Hours: 7:00am - 7:00pm Monday thru Friday
9:00am - 3:00pm Saturday



For after hour emergencies, call (805) 988-3200